



Royal
Geographical
Society
with IBG

Seven thousand years of enterprise

A self guided walk near Saltford



Explore the rolling landscape of the southern Cotswolds
Learn how people have made a living here for thousands of years
Find out about activities including prehistoric tool making and farming
Discover how the rural economy has changed

www.discoveringbritain.org

the stories of our landscapes
discovered through walks





This booklet is to be used alongside the audio commentary for this walk

Contents

Introduction	4
Route overview	5
Practical information	6
Detailed route maps	8
Directions	11
Credits	17
Further information	18

© The Royal Geographical Society with the Institute of British Geographers, London, 2011

Discovering Britain is a project of the Royal Geographical Society (with IBG)

The digital and print maps used for Discovering Britain are licensed to the RGS-IBG from Ordnance Survey

Seven thousand years of enterprise

A remarkable history of economic activity in the southern Cotswolds

From prehistoric flint knapping to eighteenth century brass hammering. From curly-haired sheep to organic dairy herds.

From micro-businesses to multi-national corporations. From horse racing to leisure boating. From local hostelrys to holiday cottages.

On this walk you will discover evidence of the tremendous range of economic activities that have been carried out on the southern slopes of the Cotswolds, just to the west of Bath, over the last 7,000 years.



Coombe Barn holiday cottages
Rory Walsh © RGS-IBG Discovering Britain

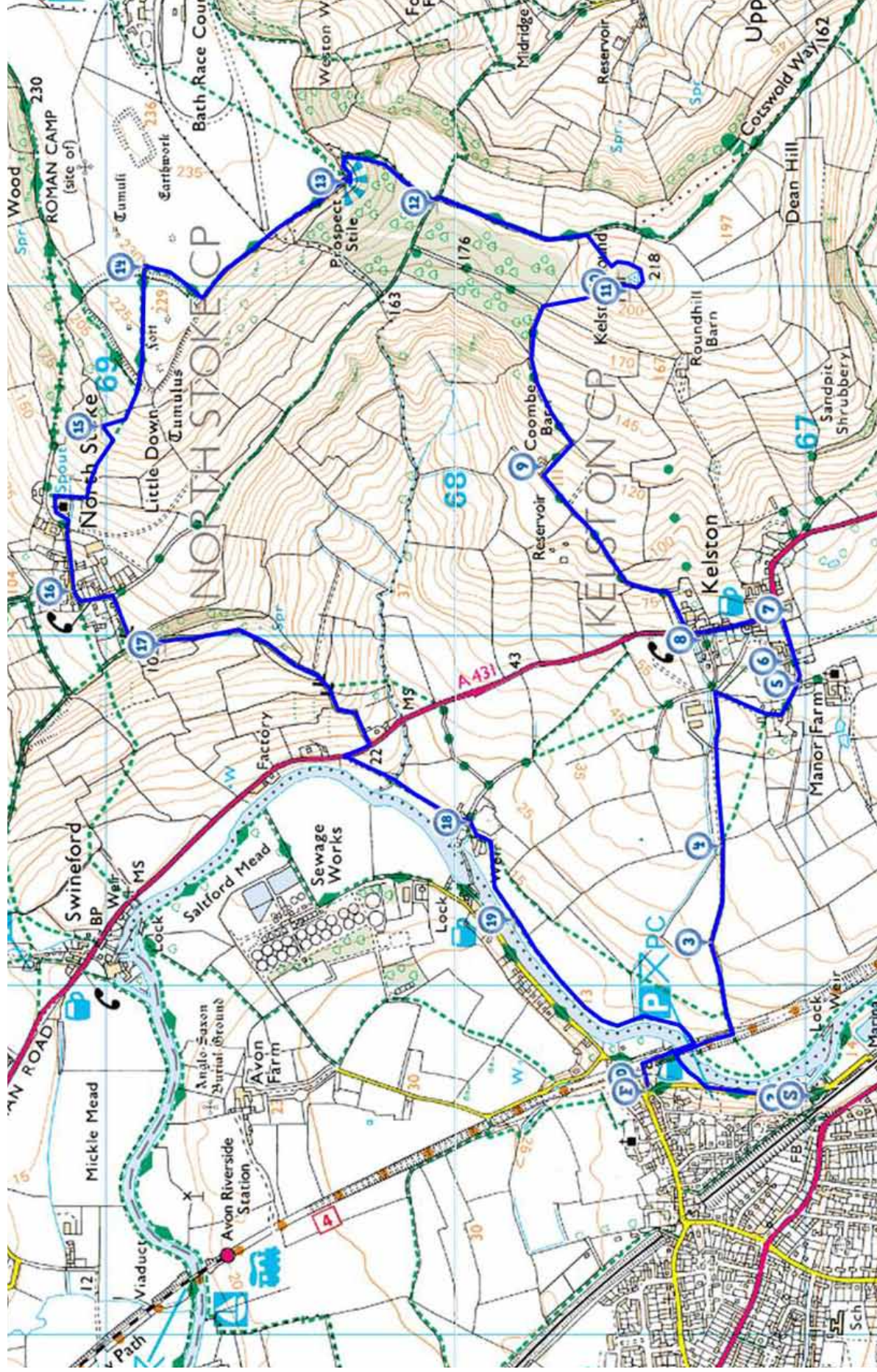


Enjoying views over the Cotswolds AONB
Rory Walsh © RGS-IBG Discovering Britain

It's a fascinating story of enterprise, where humans have innovated and adapted to changing circumstances, finding new opportunities for exploiting the landscape and earning a living.

There's also an interesting tale of people moving progressively downhill over the millennia from the hilltops in prehistoric times to the valley bottoms in recent centuries.

Route overview

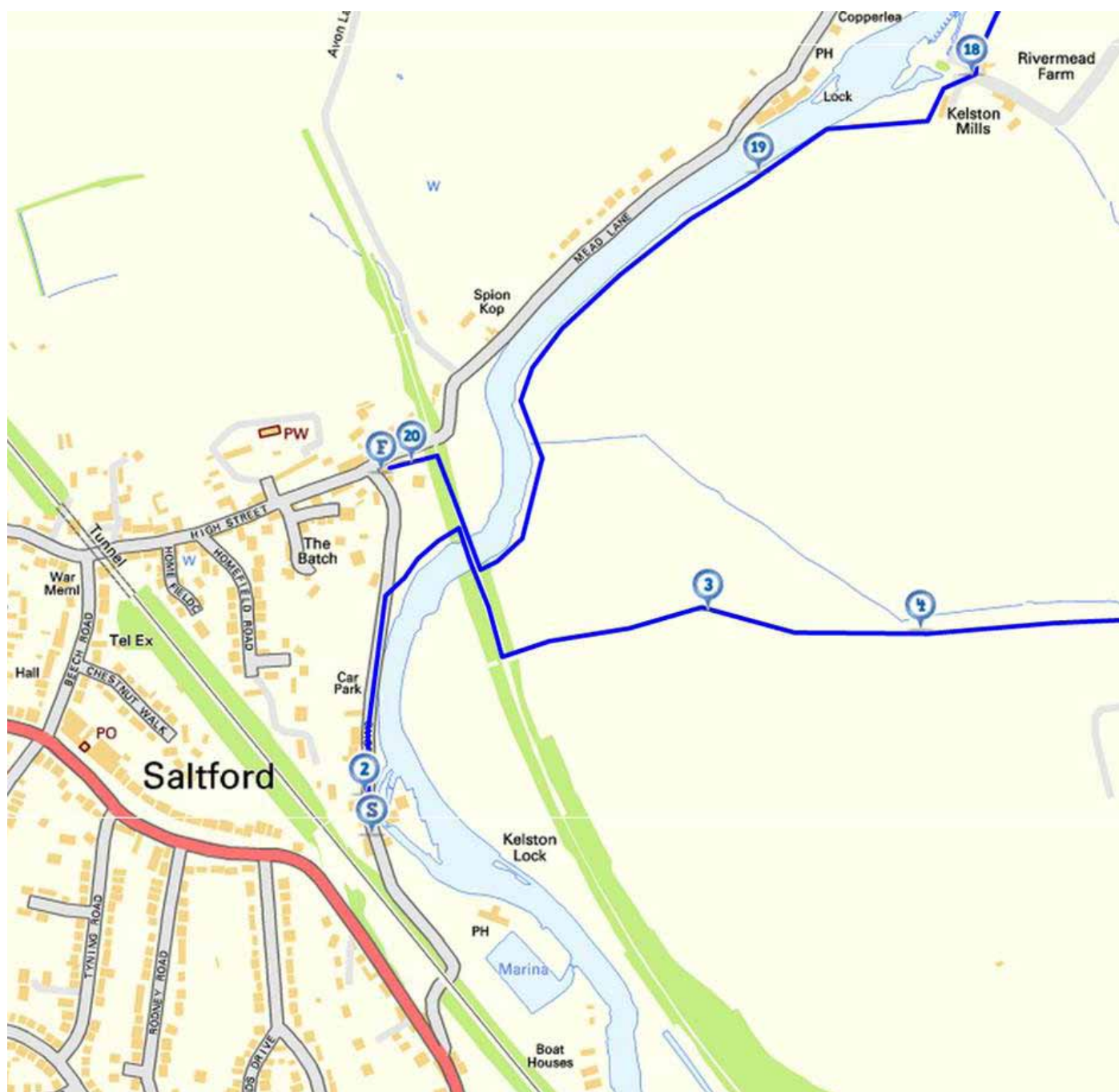


Practical information

Location	Saltford, Somerset, South West England
Getting there	<p>Train - the nearest railway station is Bath Spa (5 miles away). Direct services run to London Paddington twice an hour plus connections to Southwest England, the South Coast and South Wales</p> <p>Car - Saltford is on the A4 between Bristol (7 miles away) and Bath (5 miles away). The only car park in Saltford is at The Shallows. It is free of charge. There is also some street parking</p> <p>Bus - a bus service runs between Bristol and Bath, stopping outside the Co-op in Saltford. Services run every 12 minutes from 7am until 7pm each weekday and every 30 minutes at weekends.</p> <p>Bicycle - Saltford is on National Cycle Network Route 4. There is a metal bike rack in the Bird in Hand pub car park</p>
Start point	Saltford Brass Mill, BS31 3EY
Finish point	The Bird in Hand pub, BS31 3EJ
Directions from the A4 to the walk start	<ul style="list-style-type: none">- On the A4 through Saltford look for a crossroads near a parade of shops (which includes a post office and car dealership).- Turn into Beech Road (left if coming from Bristol; right if coming from Bath) which is indicated with an old fashioned signpost for Saltford Village and a modern sign for St Mary's Church and Evangelical Church.- After about 250 metres is a T junction. Turn right into High Street and follow the sign for St Mary's Church. Take care as this road is quite narrow in parts.- After about 300 metres turn right in front of the Bird in Hand pub and follow the narrow lane. Pass the public toilets on the right and park in the car park on the right immediately after.- Continue on foot along the lane for a short distance and the Brass Mill is on the left hand side.

Distance	6 miles
Level	Challenging – a long ascent and descent, steep in places. Some long directions between stops.
Conditions	<p>As with most rural walks the route can get muddy after rainfall. Take appropriate footwear and you may want to consider a walking stick for the steeper sections.</p> <p>Remember to close gates behind you and dispose of litter responsibly.</p>
Suitable for	Dogs - must be kept on a lead in grazing areas.
Refreshments	<p>The Bird in Hand pub in Saltford (near the start and at the end of the walk route) is open daily for refreshments, snacks and meals.</p> <p>The Old Crown pub in Kelston (between Stops 7 and 8) is open daily for refreshments, snacks and meals.</p> <p>Alternatively there are many ideal places on the route to stop for a picnic.</p>
Facilities	The only public toilets on the route are at The Shallows near the start and finish points.
Places to visit	<p>Saltford Brass Mill is open on the 2nd and 4th Saturday of May to December. Group visits by prior arrangement. (Contact Brian Cooper - Tel: 01225 872954)</p> <p>The Bath Soft Cheese shop is open daily at Park Farm, Kelston BA1 9AG (Tel: 01225 331601)</p>
Tourist information	<p>Bath Visitor Information Centre, Abbey Chambers, Abbey Churchyard, Bath BA1 1LY (Tel: 0906 711 2000)</p> <p>Bristol Visitor Information Centre, E Shed, 1 Canon's Road, Bristol, BS1 5TX (Tel: 0906 711 2191)</p>

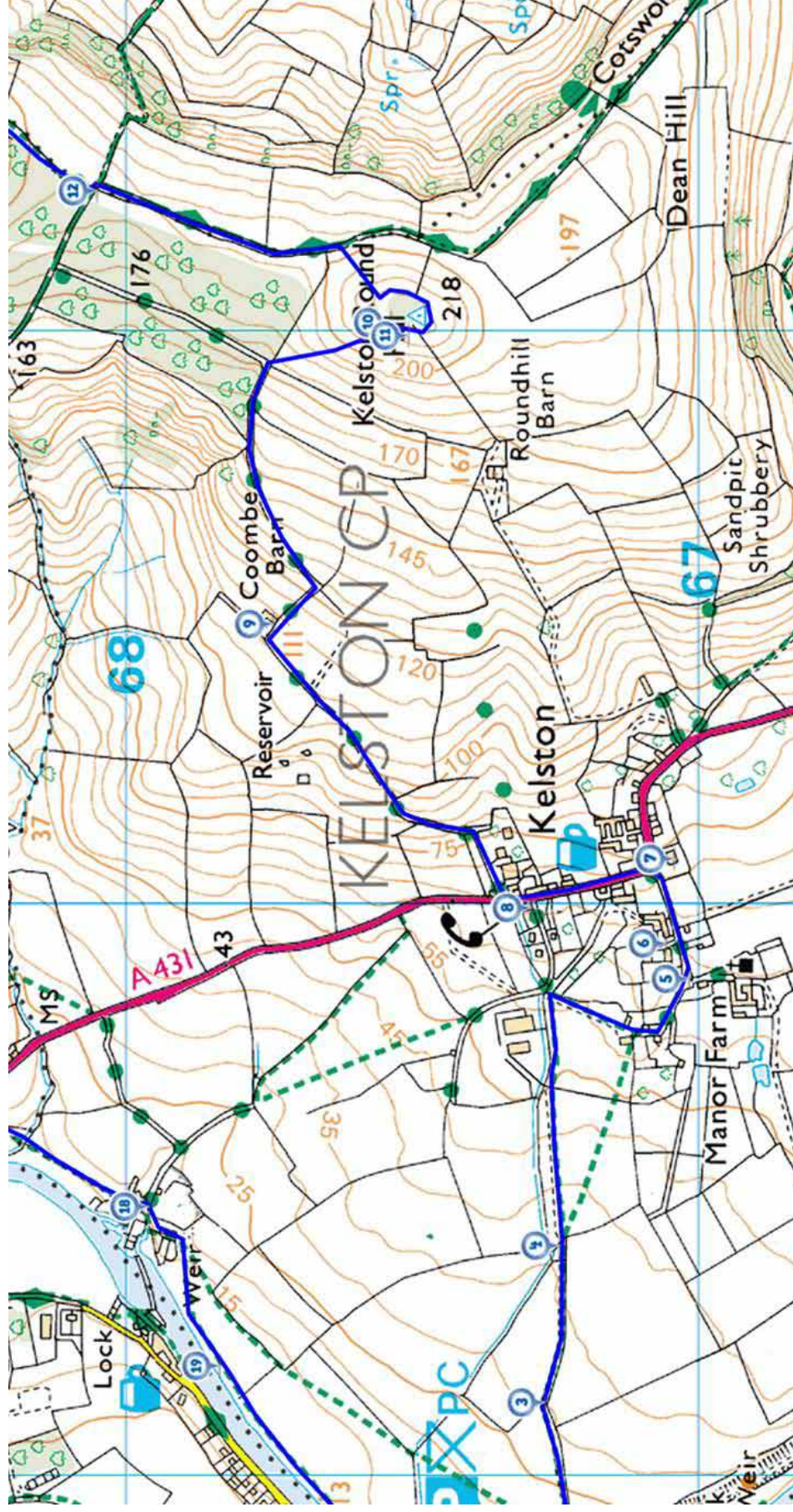
Detailed map of the start and finish of the route



Stopping points

- | | |
|--|---|
| 1. Saltford Brass Mill | 18. Kelston Mills |
| 2. Saltford Brass Mill | 19. River bank opposite Sailing Club |
| 3. The first gate walking towards Kelston | 20. Bird in Hand pub |
| 4. Park Farm fields | 21. Bird in Hand pub |

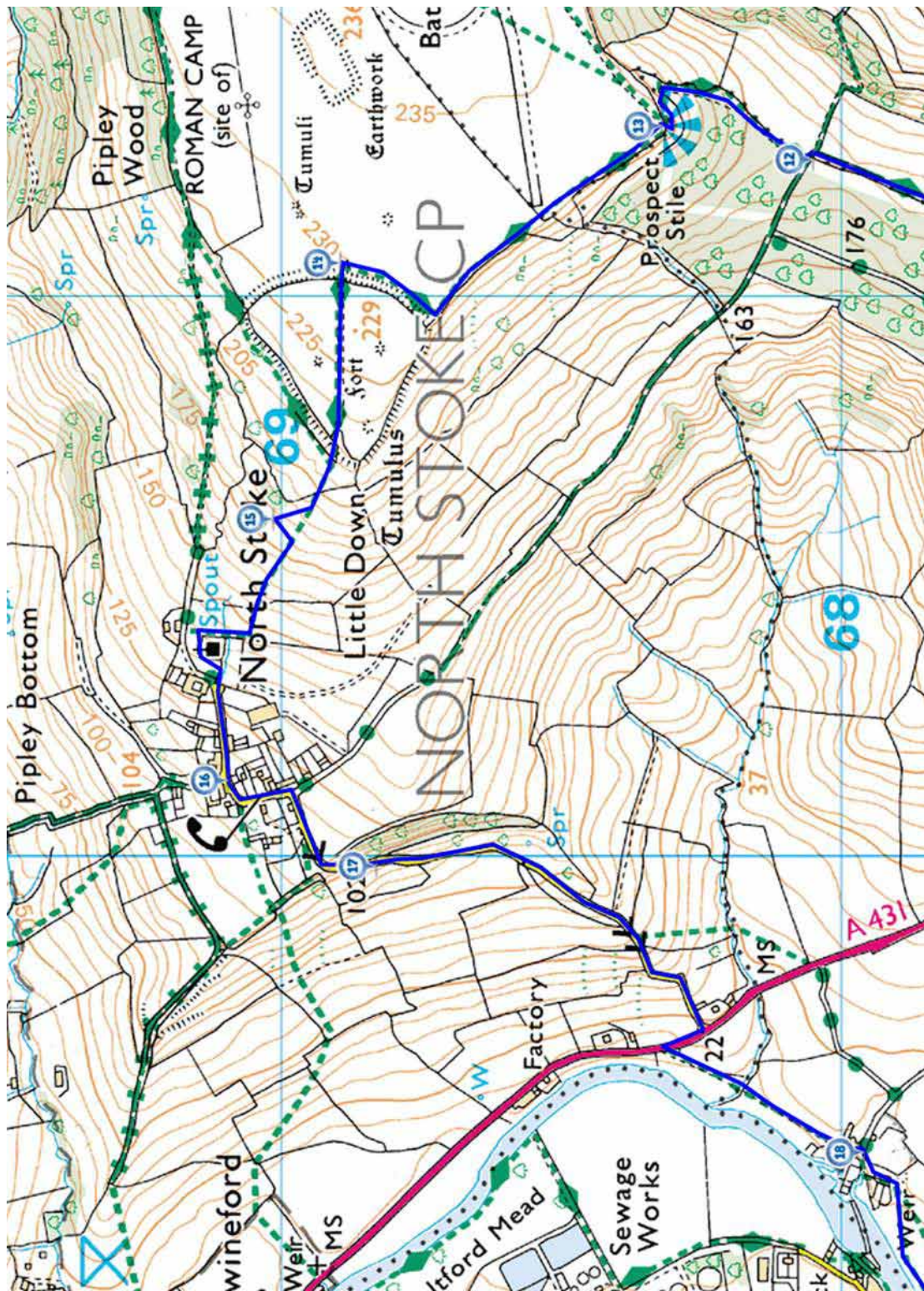
Detailed map of Kelston Village and Kelston Round Hill



Stopping points

- 5. Kelston Village Hall
- 6. Park Farm shop
- 7. The Tower House
- 8. Kelston Forge
- 9. Coombe Barn
- 10. Bench at top of Kelston Round Hill, looking west
- 11. Bench at top of Kelston Round Hill, looking west
- 12. Crossroads of footpaths between Kelston Round Hill and Prospect Stile

Detailed map of Little Down and North Stoke Village



Stopping points

- 12.** Crossroads of footpaths between Kelston Round Hill and Prospect Stile
- 13.** Topograph at Prospect Stile, Lansdown Hill
- 14.** Little Down Iron Age Fort
- 15.** Willow tree in field above North Stoke village
- 16.** Chestnut Barn, North Stoke
- 17.** Viewpoint on the road down from North Stoke
- 18.** Kelston Mills

Directions

Listen to each track then read the directions below to get to the next stop.

1. My favourite walk

Saltford Brass Mill

Directions 1

To begin the walk make your way to Saltford Brass Mill. Stop outside the Mill and listen to Track 2.

2. Pots and pans

Saltford Brass Mill

Directions 2

From the Mill, keep the river on your right and go along The Shallows, past the car park. On the opposite side from the public toilet is a gateway leading to a permissive footpath. Follow this footpath and up the steps onto the embankment of the old railway. Turn right and cross the bridge. Keep to one side as the track is often busy with speeding cyclists.

Pass the River Avon Trail information board and look for a stone bridge parapet on the left a few hundred metres further on. Take the path at the side of the parapet leading steeply down to a stile and the track below. Turn left up the track. Stop before the first gate and listen to Track 3.

3. Natural beauty

The first gate walking towards Kelston

Directions 3

Go through the gate and continue following the track through the fields. Stop at the second gate and listen to Track 4.

4. Changing fields

Park Farm fields

Directions 4

Continue to follow the track straight up the field. At the white painted farm buildings take the footpath on the right between two fields. Then follow the track past a thatched cottage and a cattery. Follow the road into the village to the junction with Kelston Village Hall and St Nicholas's Church off to the right. Stop here and listen to Track 5.

5. Village of calves

Kelston Village Hall

Directions 5

Take the road to the left and after a very short distance is the entrance to Park Farm. Look for the sign for cheese. Stop at the farm gate and listen to Track 6.

6. Soft cheese

Park Farm shop

Directions 6

After visiting the cheese shop and purchasing provisions for later in the walk (!), turn left out of the farmyard up the road. As you reach the junction with the A431, stand on the left pavement to look over the wall to the Tower House and listen to Track 7.

7. Widows and mistresses

The Tower House

Directions 7

Turn left along the A431 pavement, keeping on the left hand side. Look out for unusual symbols carved on different buildings. You may wish to stop at the The Old Crown for refreshments or food. Continue past the pub. Stop at Kelston Forge by the red telephone box and listen to Track 8.

8. Bakery or smithy?

Kelston Forge

Directions 8

Cross the road carefully and turn right past Mill Farm Cottage. Follow the lane uphill, past industrial units, also converted from former farm outbuildings. Continue following the lane upwards. Stop when you reach Coombe Barn Holiday Cottages and listen to Track 9.

9. Room with a view

Coombe Barn

Directions 9

Continue up the land from Coombe Barn. After 100 metres the track bends to the left and continues steepening. After another 400 metres, where the track takes another bend to the left, turn off the track to the right. Climb up the bank, over the stile and follow the permissive footpath climbing through the steep pasture land to the wooded summit of Kelston Round Hill. Stop at the summit to listen to Track 10. There is a bench where you can recover from the climb!

10. Roman remains

Bench at the top of Kelston Round Hill, looking west

Directions 10

Remain at the bench at the top of Kelston Round Hill and listen to Track 11.

11. Prehistoric finds

Bench at the top of Kelston Round Hill, looking west

Directions 11

Continue round the top of Kelston Round Hill, keeping the copse on your left. Go over the stile into the next field and pass the trig point. Continue around the top of the hill until you have come almost full circle, then head downhill to a gate. Turn left along the Cotswold Way footpath. Go through the next metal gate and stop after turning left through a second metal gate and listen to Track 12.

12. Roman routeway

Crossroads of footpaths between Kelston Round Hill and Prospect Stile

Directions 12

Turn right through the wooden swing gate. You may like to stop and read the information on the Shiner's Wood notice board on the left. Follow the Cotswold Way footpath upwards and then through the gate at the top. Stop at the viewpoint and topograph at Prospect Stile and listen to Track 13.

13. A day at the races

Topograph at Prospect Stile, Lansdown Hill

Directions 13

Follow the Cotswold Way footpath with the hedge on your left and the racecourse on your right. After the racecourse field, go through the gate and continue following the path. At one point, the path takes a right turn and there is a ditch and rampart on the left hand side. After about 200 metres, the path takes a 90 degree left turn through a break in the ditch and rampart. Go through this gap to the field beyond which is marked on the map as 'fort'. Straight ahead the field slopes gently downhill. Stop overlooking the expansive views to the west and listen to Track 14.

The path to the next stop is not obvious - so please follow the directions carefully and use the map and photos to guide you

14. Moving downhill

Little Down Iron Age Fort

Directions 14

The path to the next stop is not obvious so please follow the directions carefully and use the photos to guide you.

Follow the footpath across the field that is marked as 'fort' on the map. It is flat to the middle of the field and then goes gently downhill.

Pass through the gate and go down the slope. Dogs should be put on a lead here as there are often sheep in the next fields.

Take a moment to enjoy the magnificent view. At this point the Cotswold Way footpath turns right and follows the shoulder of the hill towards the Roman Camp. Do not take this path but instead follow the footpath sign that points straight ahead.

Make your way downhill across uneven ground. The footpath through this field is not clear but there is a wooden post part way down the hill that you should aim for.

After the wooden post divert slightly from the designated path - bear diagonally to the right alongside a line of trees on the left. The square tower of North Stoke church is directly below across the field.

Find the last tree in the row - a large willow - which has a large depression in the land on the lower side. Stop by the depression below the willow tree. Listen here to Track 15



15. The lion of the Cotswolds

Willow tree in the field above North Stoke village

Directions 15

From the willow tree continue diagonally down the field to a gate. Turn left down the track.

Do take time to go into North Stoke church which is usually unlocked. Be careful when descending the steps from the church because they can be slippery. In wet or frosty weather it would be best to go back to the church car park and take the stony track downhill instead of the church steps.

Follow the track past a small pond down into the village. Stop at the first junction by the postbox and Chestnut Barn and listen to Track 16.

16. Thank you for the music

Chestnut Barn, North Stoke

Directions 16

Follow the lane as it winds through North Stoke village. After some way it starts to descend quite steeply. Take care because there can be traffic. After the shady bend with trees on either side there is an opening on the right hand side where you can see down to the bottom of the valley. Stop here and listen here to Track 17.

17. Waste and wildlife

Viewpoint on the road down from North Stoke

Directions 17

Continue down the lane. At the junction with the A431, turn right and walk 100 metres along the pavement until you see a footpath across the road on the left. Take care when you cross the road. Go over the stile and follow the footpath, with the river on your right. Cross a small metal bridge and over a stile into a meadow. In this field, remember to look out for any signs of the road and bridge that diverted construction traffic to the sewage works across the river. Continue across the meadow to the buildings of Kelston Mills. Stop in the centre of the hamlet and listen to Track 18.

18. Ollis and Frankham

Kelston Mills

Directions 18

Follow the footpath immediately in front of the terraced houses and admire the well-tended gardens. Go through the wooden swing gate and follow the footpath to the right down to the riverside. Turn left at the metal swing gate and continue along the river bank. Stop when you are opposite the sailing club and listen to Track 19.

19. Down by the riverside

River bank opposite Saltford Sailing Club

Directions 19

Continue along the river bank footpath. When you reach the old railway bridge, climb up the embankment and turn right onto the bridge. Do take time to look at the view from the bridge, from where you can see most of the walk that you have just completed. Cross the bridge and continue along the cycle track for another 100 metres. Turn left down the embankment to the Bird In Hand pub. Stop in the car park and listen to Track 20.

20. Thirsty work

Bird in Hand pub

Directions 20

A diversion into the Bird in Hand for the famous bacon butties, lunch or just a drink, is highly recommended after you have listened to Track 21. Otherwise, turn left at the front of the pub to return to The Shallows and listen to Track 21.

21. Seven thousand years of making a living

The Shallows or Bird in Hand pub

Directions 21

From the front of the pub it is just a few hundred metres back to The Shallows.

Credits

The RGS-IBG would like to thank the following people and organisations for their assistance in producing this Discovering Britain walk:

- **Dick Bateman** for creating the walk and providing photographs
- **Tony Coverdale**, Secretary of Saltford Brass Mill Project, for an enthusiastic and informative guided tour of the mill
- **Graham Padfield**, owner of Park Farm, for a fascinating insight into his organic cheese business, and a private tasting session
- **Andrew Dinham**, former farmer of Round Hill Farm, for showing his remarkable collection of prehistoric metal detecting finds
- **Chrissie Cullimore**, farmer of Coombe Barn, for sharing the story of Shiner
- **Jonathan Webb** for allowing us to use his aerial photographs
- **Bill Occleshaw** for taking time out of his busy schedule to talk about life in North Stoke
- **Sheila Bateman** for providing lovely sandwiches to sustain the walk production team
- **Jenny Lunn** for editing the walk materials
- **Rory Walsh** for taking photographs and assistance compiling the walk resources
- **Caroline Millar** for editing the audio commentary
- **Neil McKenna, Alex Ricketts, Nick Stanworth** and **Florence Lee** for additional assistance with compiling walk resources
- **Saltford Brass Mill Project** and **Bath in Time** for kind permission to use archive images
- **Ceri Price and friends** for testing the walk on the hottest day of the year and providing very helpful feedback

Further information

Find out more about places of interest along the walk route

Bath Racecourse

www.bath-racecourse.co.uk

The Bath Soft Cheese Company

www.parkfarm.co.uk

The Bird in Hand pub, Saltford

www.birdinhandsaltford.co.uk

Bristol Avon Sailing Club

www.bristol-avon-sailing.org.uk

Coombe Barn Holidays

www.holiday-cottages-bath.co.uk

Cotswolds Area of Outstanding Natural Beauty

www.cotswoldsaonb.org.uk

Keynsham & Saltford Local History Society

www.keysalthist.org.uk

The Old Crown pub, Kelston

www.oldcrown.butcombe.com

The Saltford Brass Mill Project

www.brassmill.com



Britain's landscapes are wonderful.

There is a tremendous variety within our shores – whether in the countryside, in towns and cities or at the seaside. And every landscape has a story to tell about our past and present.

Discovering Britain is an exciting series of geographically-themed walks that aim to bring these stories alive and inspire everyone to explore and learn more about Britain. Each walk looks at a particular landscape, finding out about how forces of nature, people, events and the economy have created what you see today.

The self-guided walks are fun, informative and inspiring. Prepare to discover something new, to be surprised and to find the unexpected.

Visit www.discoveringbritain.org to

Send your review of this walk

Search for other walks

Suggest a new walk